

# VISUAL PREPARATION

**Here I find everything I need to know for my first  
visit to a theatre piece at Budascoop.**

# THIS IS BUDASCOOP





# HOW DO I GET TO BUDASCOOP?

By bike?



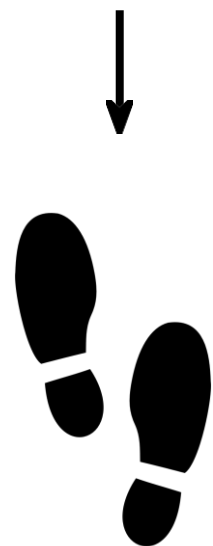
I can park my bike for free in the covered bike park.

# HOW DO I GET TO BUDASCOOP?

## By train?

Kortrijk train station is an 11-minute walk from Budascoop.

I click on the feet to see the route from the station to Budascoop.



I plan my journey through the NMBS website. I click on the NMBS logo to go to their website.

A screenshot of the NMBS website's 'Mijn treinreis' (My train journey) page. The page has a blue header with the NMBS logo (a white 'B' in a circle) and the title 'Mijn treinreis'. Below the header, there are input fields for 'Van:' (From) and 'Naar:' (To). The 'Naar:' field is filled with 'Kortrijk'. There are also input fields for 'Datum:' (Date) and 'Tijd:' (Time), both with three dots indicating a dropdown menu. Below these fields, there are two radio buttons: 'Vertrek' (Departure) which is selected, and 'Aankomst' (Arrival). At the bottom, there is a button labeled 'Plan mijn reis' with a right arrow. A link '> Personaliseer mijn reis' is also visible above the button.

**Mijn treinreis**

Van: ...

Naar: Kortrijk

Datum: ... Tijd: ...

☒ Vertrek ☐ Aankomst

> [Personaliseer mijn reis](#)

Plan mijn reis >

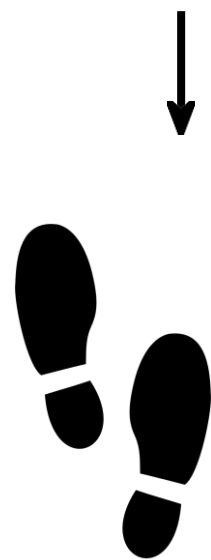


# HOW DO I GET TO BUDASCOOP?

## By car?

I can park my car at Broeltorens car park.

I click on the feet to see the route  
from the car park to Budascoop.





# HOW DO I GET TO BUDASCOOP?

## By car?

I can park my car at Budabrug car park.

I click on the feet to see the route  
from the car park to Budascoop.





# ENTRANCE HALL

I walk up the stairs to go to the entrance hall.

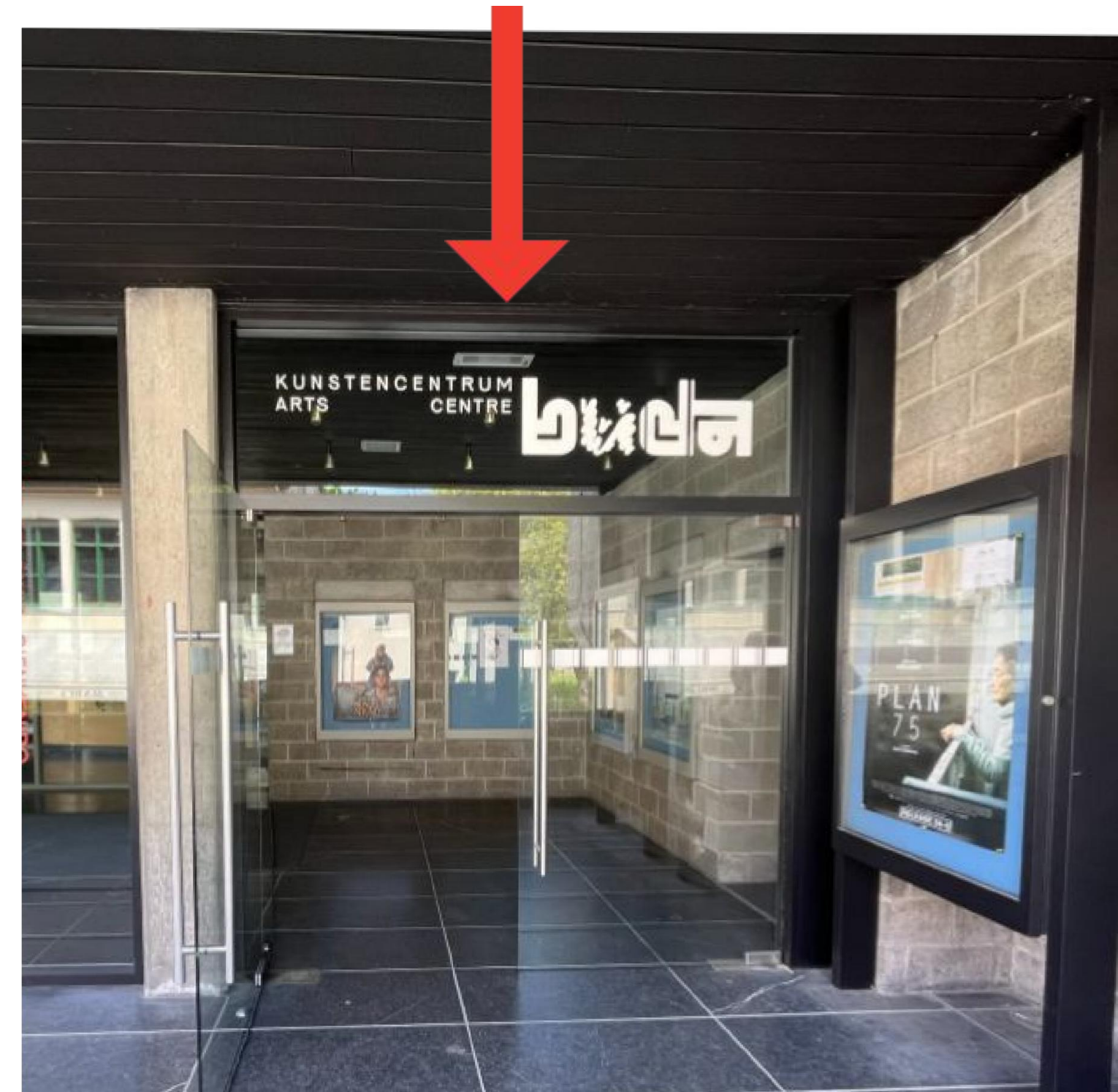
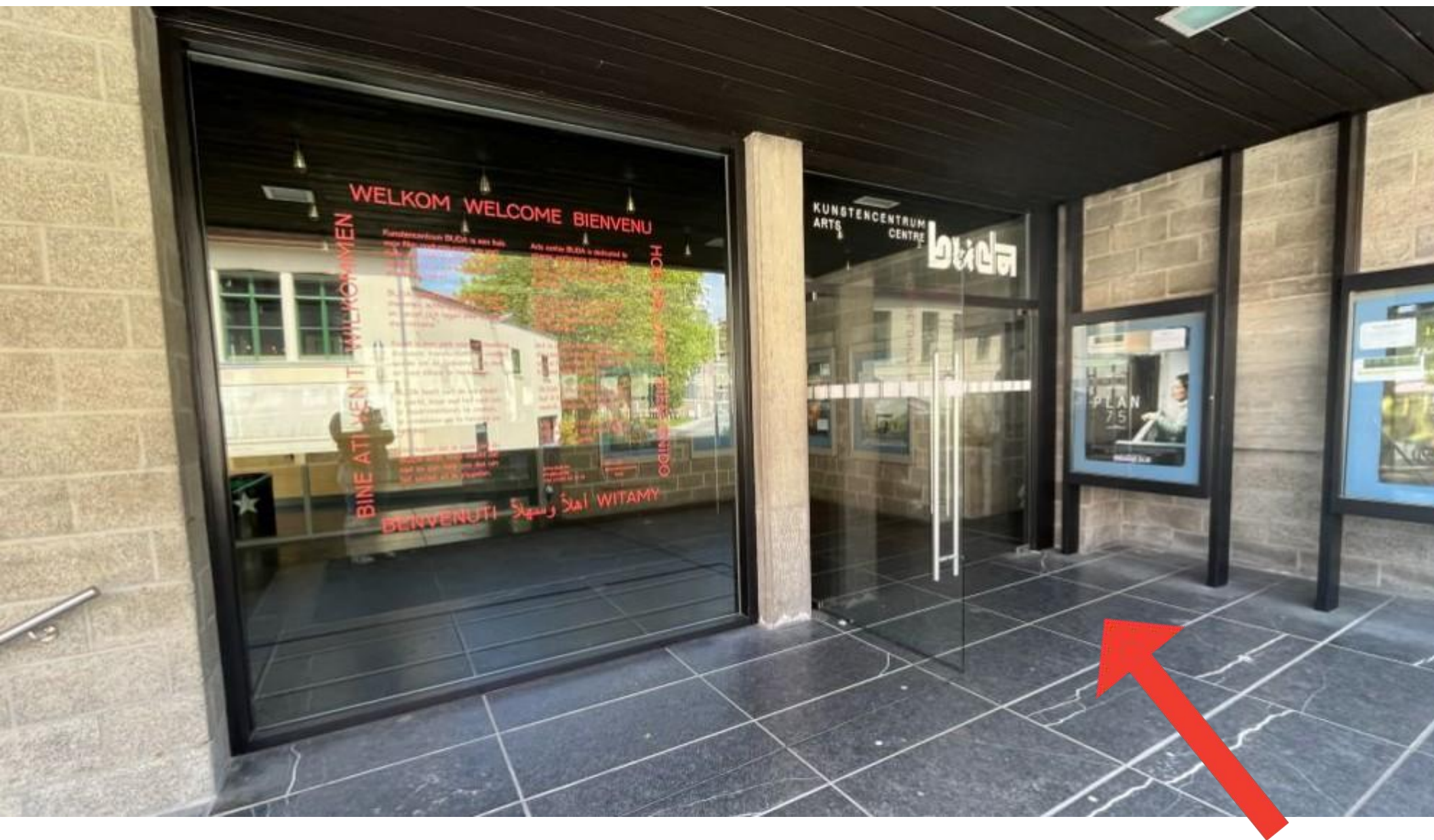
To see the wheelchair-accessible entrance, click here.





# ENTRANCE HALL

Through this glass door, I enter the entrance hall.

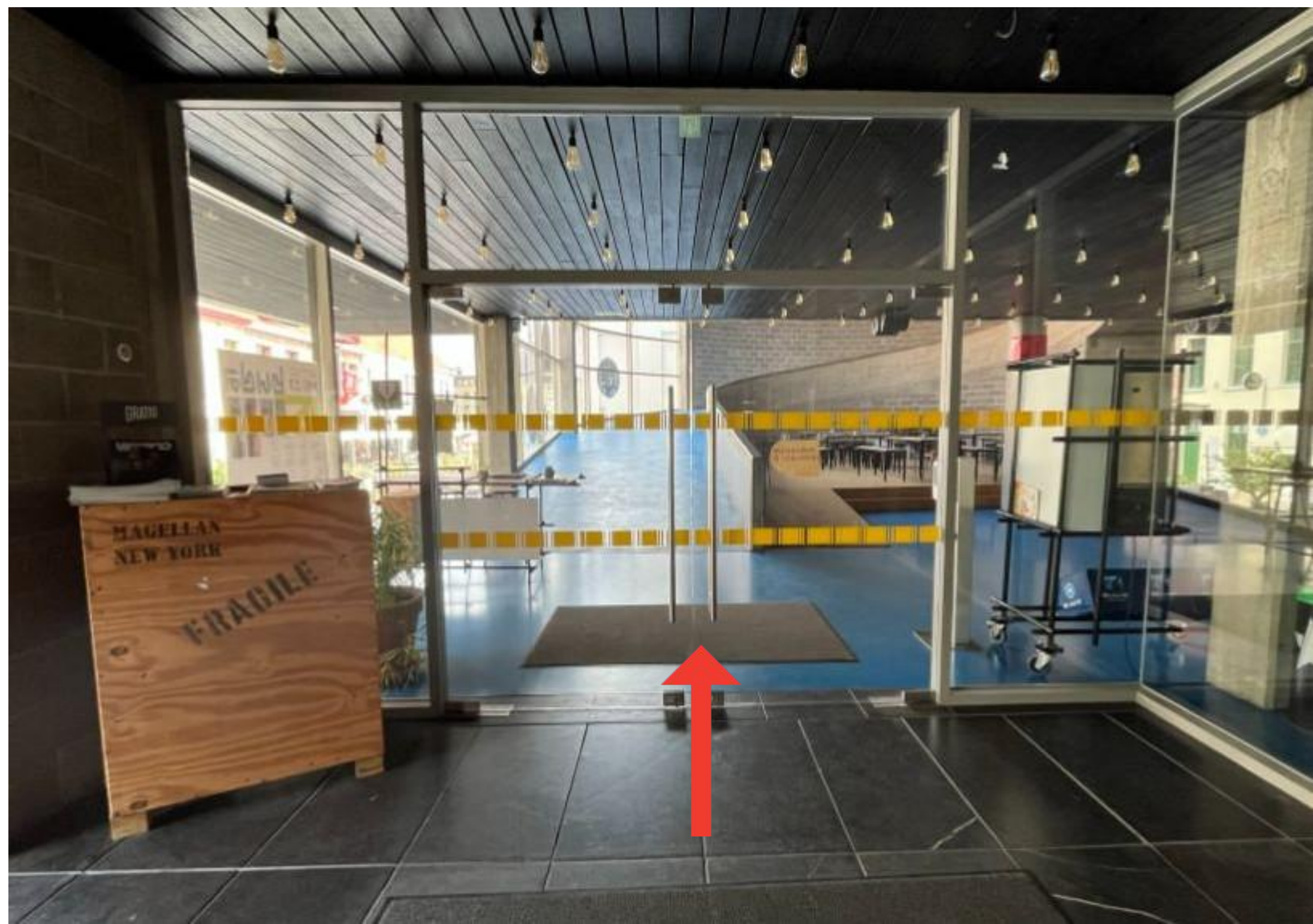




# ENTRANCE HALL

Through this glass door, I enter the cinema.

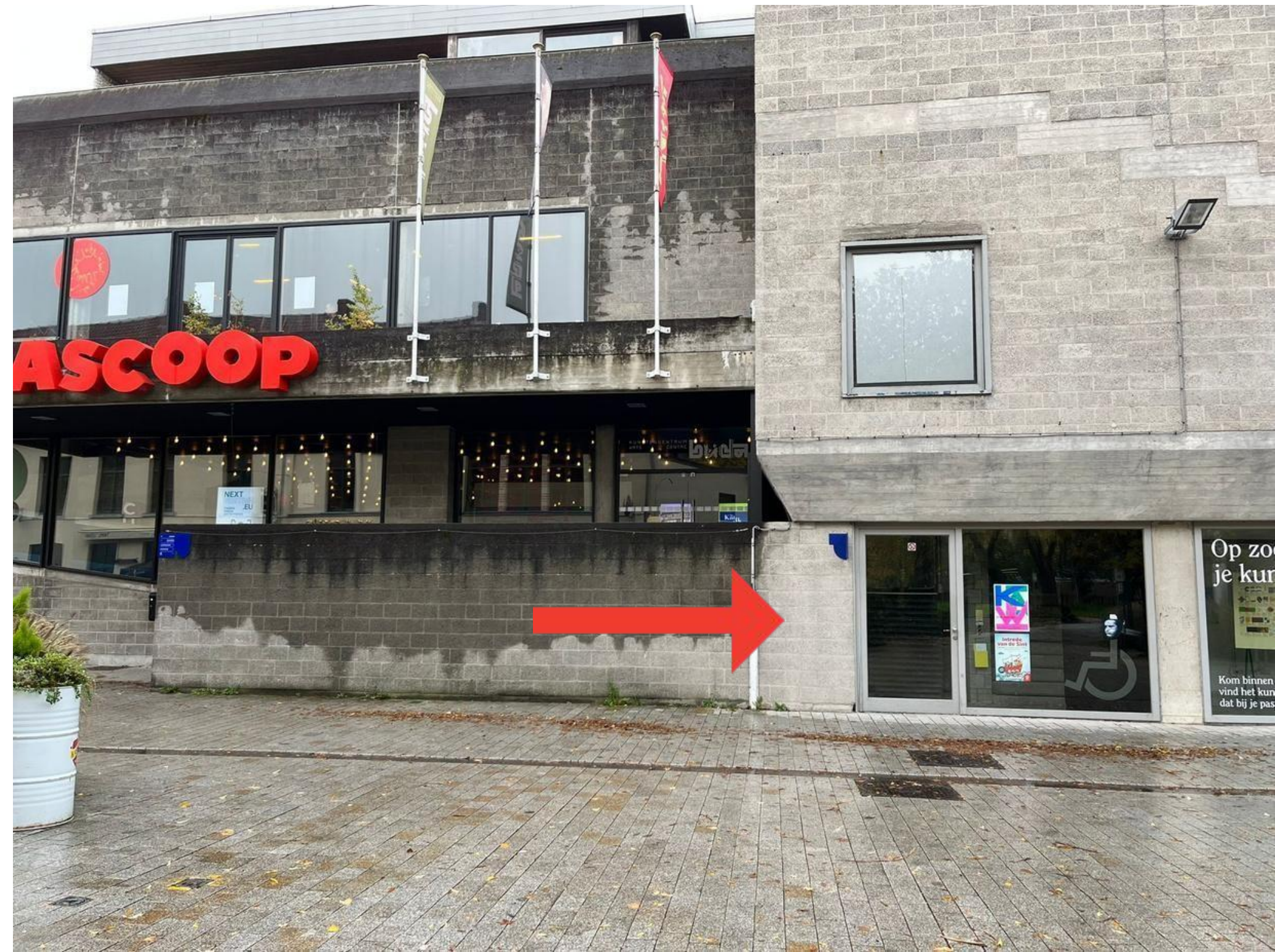
If I don't need to see the wheelchair-accessible entrance and want to go directly to the entrance of Budascoop, I click here.





# ENTRANCE HALL

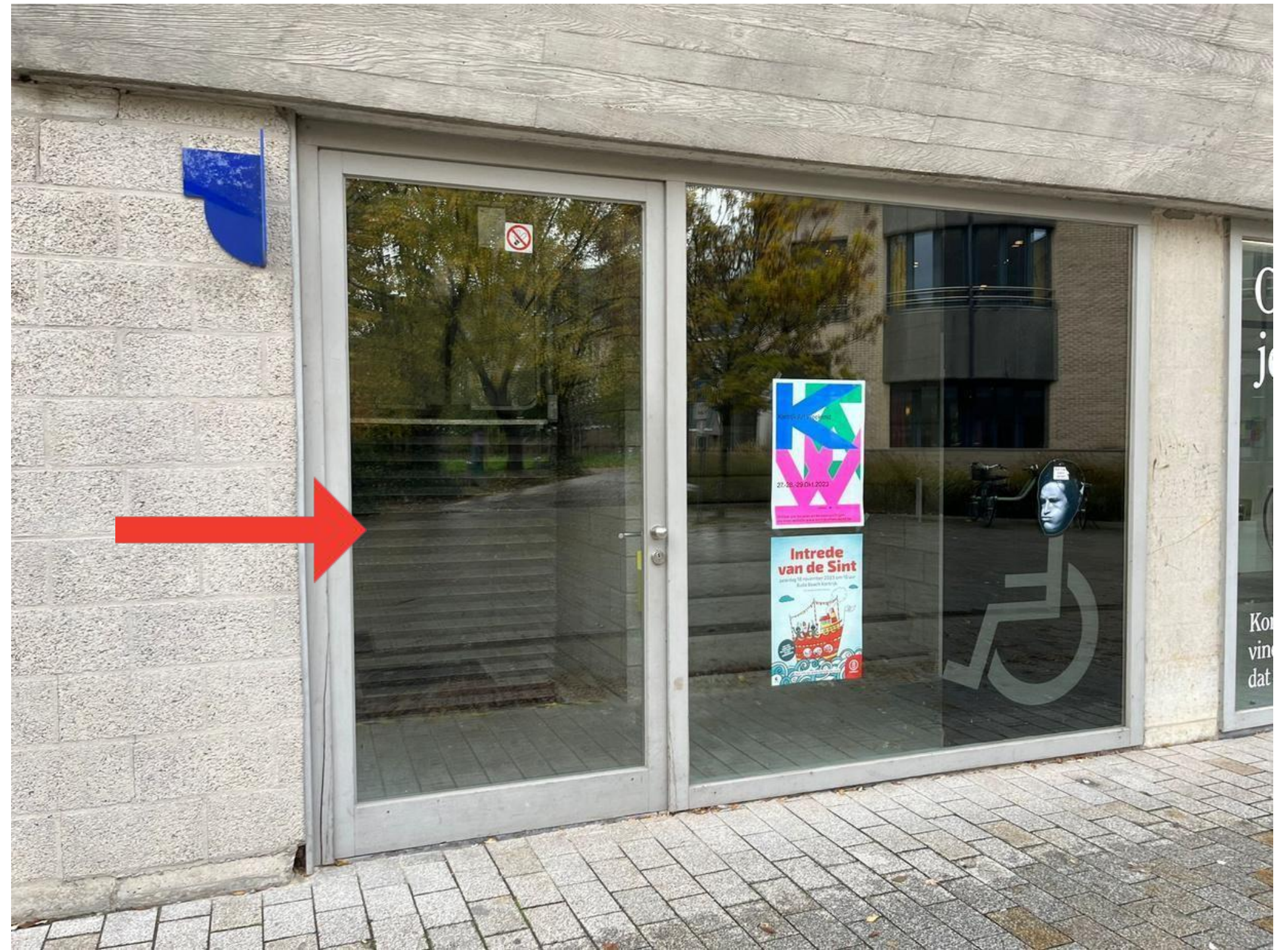
On the right side of Budascoop, I find the wheelchair-accessible entrance.





# ENTRANCE HALL

I open this door to get to the wheelchair lift.





# ENTRANCE HALL

When the lift is up, I can make it come down by pressing these buttons.





# ENTRANCE HALL

I press the middle button to make the lift come down.





# ENTRANCE HALL

Once the lift has come down fully, I open the doors by hand.





# ENTRANCE HALL

Once the doors are open, I  
can enter the lift.





# ENTRANCE HALL

When I am in the lift, I can control it using these buttons. I press the left button to go up.





# ENTRANCE HALL

Once the elevator has stopped I open the doors on the other side by hand.





# ENTRANCE HALL

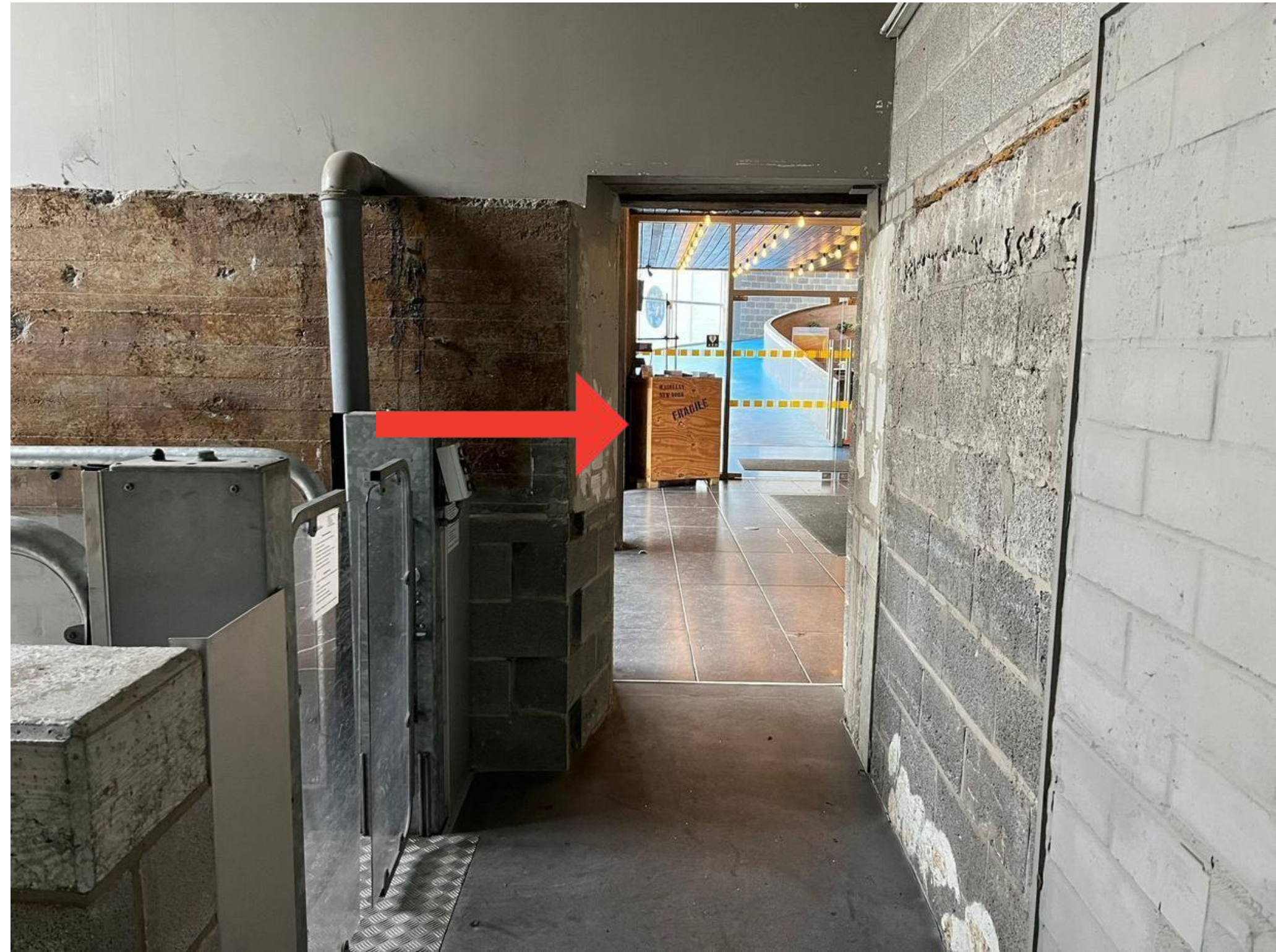
When the doors are open I can exit the lift.





# ENTRANCE HALL

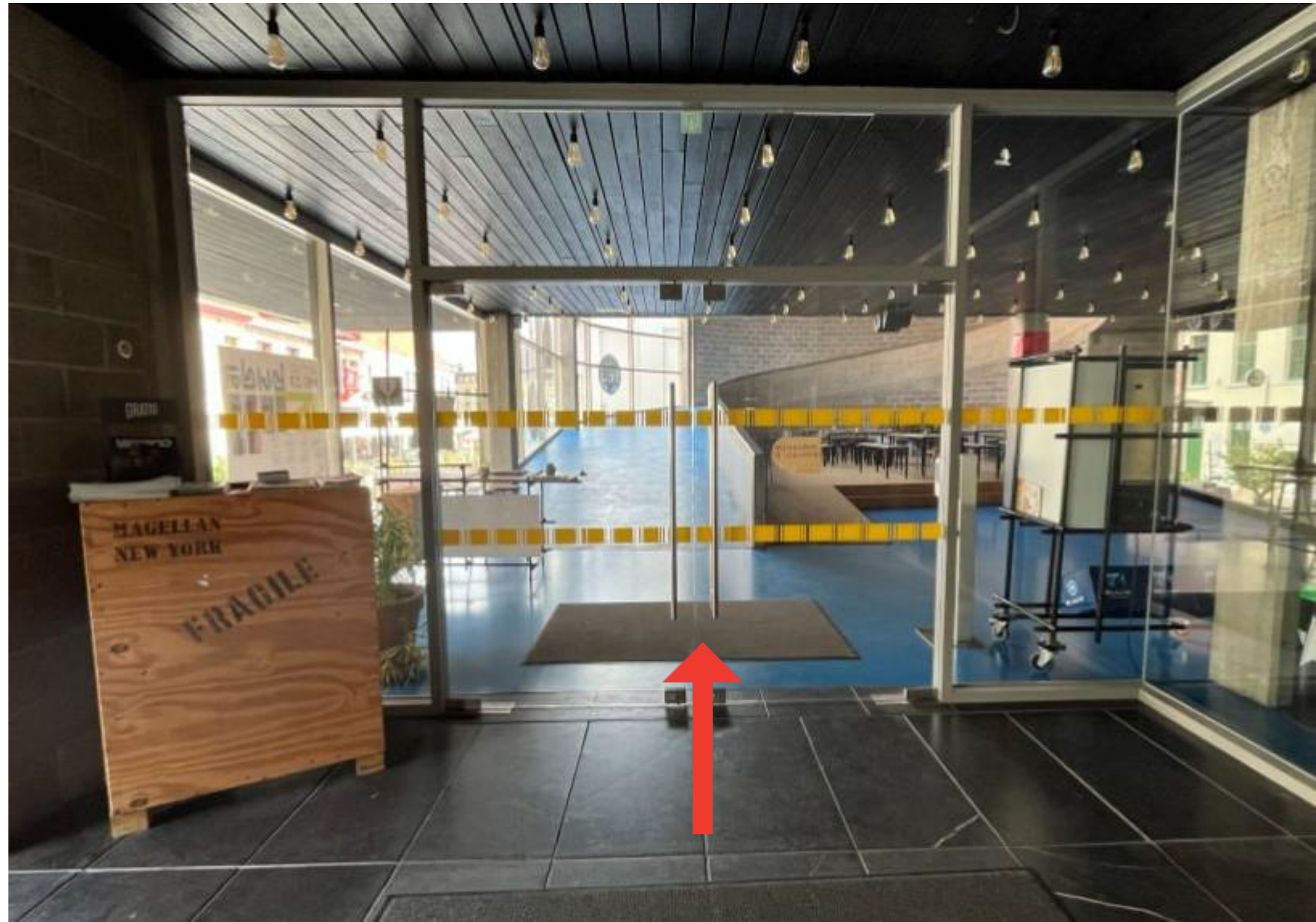
Coming out of the lift, I turn left to go to the entrance of Budascoop.





# ENTRANCE HALL

Through this glass door, I enter the cinema.





# ENTRANCE BUDASCOOP

this is the entrance of Budascoop.

There may be many people present in the entrance hall.





# FOYER

I follow the slope to get to the foyer.

[I click here if I prefer to go by lift  
because I have less mobility.](#)

[I click here if I want to follow the  
slope upwards.](#)





# LIFT

I find the lift right next to the bar in the ground-floor rotunda.





# LIFT

In the lift, I press number 3 to go to the foyer.  
The button will light up after I press it.

I click here to go to  
the foyer.





# FOYER

I follow the slope to get to the foyer.





# FOYER

I follow the slope to get to the foyer.





# FOYER

This is what the foyer looks like.





# FOYER

Many people may be present in the foyer before and after the performance.





# BOX OFFICE

At the entrance to the foyer, I find the box office. I can buy my ticket for the performance here.

I pay by cash, Bancontact or Payconiq. If I have any questions, I ask them here.





# BOX OFFICE

I may see people queuing up here.

I join the queue and patiently wait my turn.





# BOX OFFICE

## Sonya Lindfors: Cosmic Latte

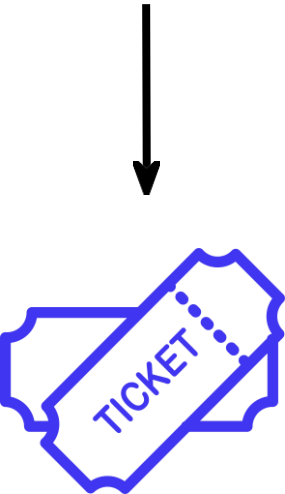
DO 29 JUNI 2023, 20:15 - ZAAL 1

Kaartje	Prijs	Aantal	Tot.
Standaard Podium	€ 15,00	<input type="text" value="0"/>	€ 0,00
Aan jou om te bepalen of de suggestieprijs past binnen jouw huidige financiële situatie... of eerder niet. Kan je een hogere ticketprijs betalen? Dan maak jij het mogelijk dat anderen minder betalen.			
€5	€ 5,00	<input type="text" value="0"/>	€ 0,00
€10	€ 10,00	<input type="text" value="0"/>	€ 0,00
€20	€ 20,00	<input type="text" value="0"/>	€ 0,00
€25	€ 25,00	<input type="text" value="0"/>	€ 0,00
Gratis ticket	€ 0,00	<input type="text" value="0"/>	€ 0,00
CUBO	€ 0,00	<input type="text" value="0"/>	€ 0,00
Enkel geldig voor CUBO-houders. Breng jouw UiTPAS en identiteitskaart mee naar de kassa.			
UiTpas - Kansentarief	€ 3,00	<input type="text" value="0"/>	€ 0,00

Enkel voor houders van een UiTPAS met sociaal tarief. Neem jouw UiTPAS mee naar de kassa.

I can also buy my ticket for the performance online in advance. This way I can be sure I have a ticket for the performance.

I click on the ticket to go to the website.





# BOX OFFICE

This is what my e-ticket that I bought online looks like. I have this scanned at the ticket office.

My ticket may look a little different from this ticket. This depends on the performance I am going to.

## AGATA MASZKIEWICZ & SUPERAMAS: ZERO TO INFINITY

VRIJDAG 30 JUNI 2023, 21:30

**BK6**

Deze voorstelling is niet geplaatst  
Standaard Podium € 15.00

Code:



KBTEZVVR4H - 16758387



# HOW TO READ MY TICKET?

This is the date of the performance.

This is the starting hour of the show.

This is the location where I am expected.

This is the code I have scanned at the entrance.





# THIRSTY?

At the bar, I can order a drink.

At the bar, I pay for my drink using cash, Bancontact or Payconiq.





# CLOAKROOM

The cloakroom is on the ground floor. I find the corridor to go to the cloakroom to the left next to the film box office.

I follow the red arrow to go to the cloakroom. There I can store my things (for free).





# CLOAKROOM

I follow the red arrow to get to the cloakroom.

I find the cloakroom on my left.





# CLOAKROOM

I put my coat or bag that I don't want to take into the cinema in a locker.

I lock the locker and keep the key carefully with me.





# TOILETS

Before the performance, I  
can go to the toilet  
(for free).

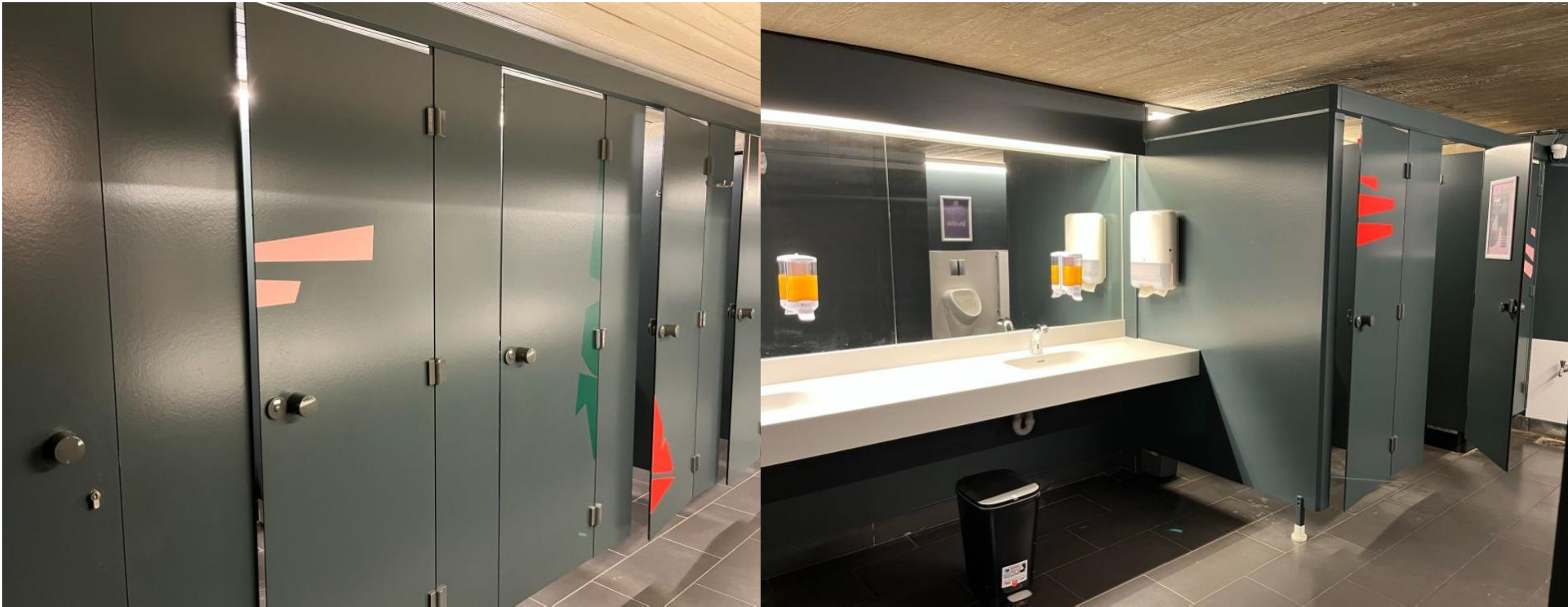
I find the toilets right next  
to the cloakroom.





# TOILETS

These are gender-neutral toilets. It doesn't matter which toilet I enter.  
I can use the free menstrual products.





# HALL 1

I find hall 1 to the right  
of the bar.

This is a room with  
270 seats.



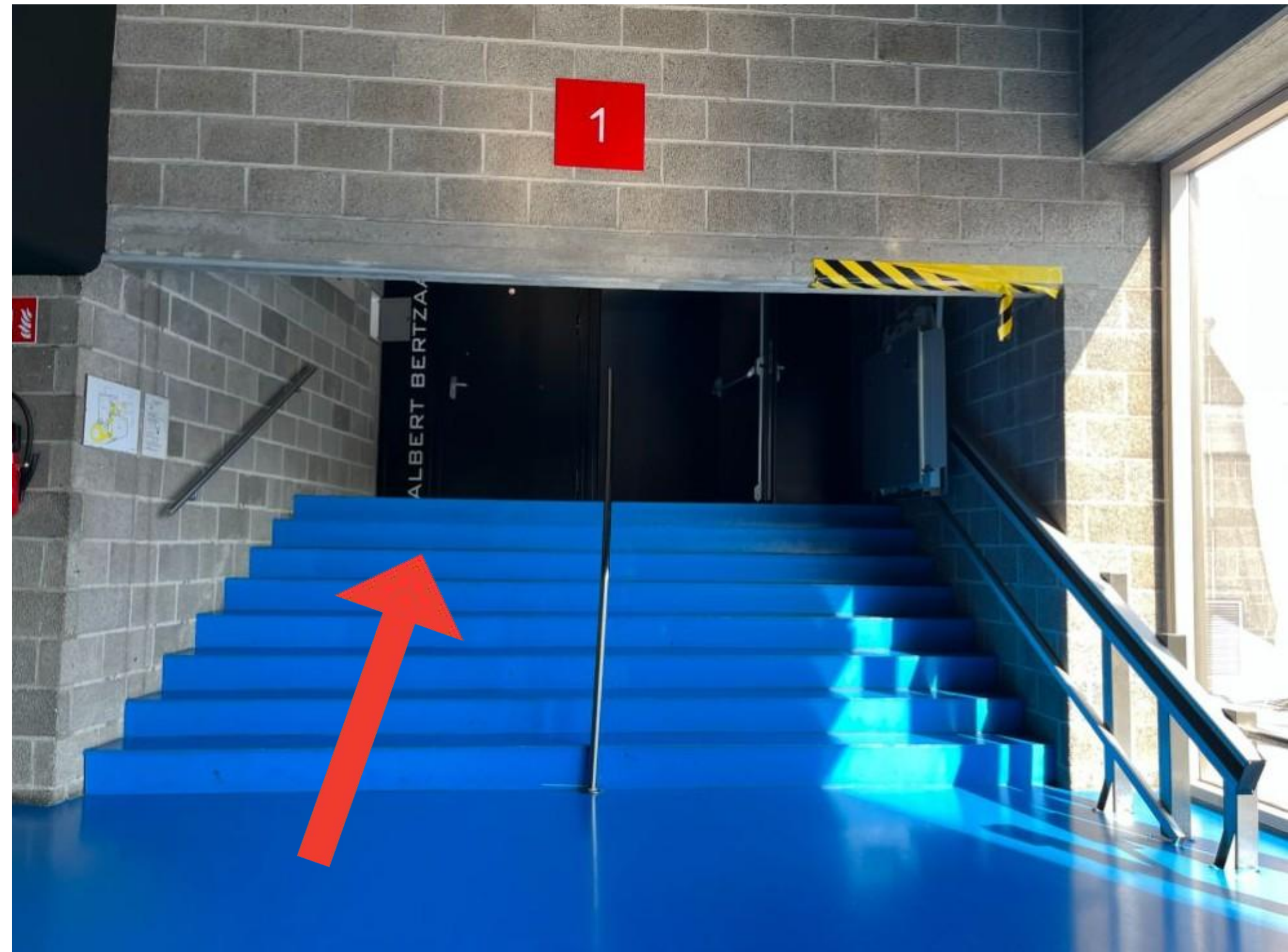


# HALL 1

I go up the stairs to go to hall 1.

To see the wheelchair-accessible entrance, click here.

To go directly to the entrance of room 1, click here.





# HALL 1

If my mobility is reduced, I can also take the lift to the hall.

I ask a staff member present to escort me to the hall via the lift.

[To continue to room 1, click here.](#)





# HALL 1

I turn left or right to enter the hall.

Which side I choose doesn't matter, I end up in the hall anyway.





# HALL 1

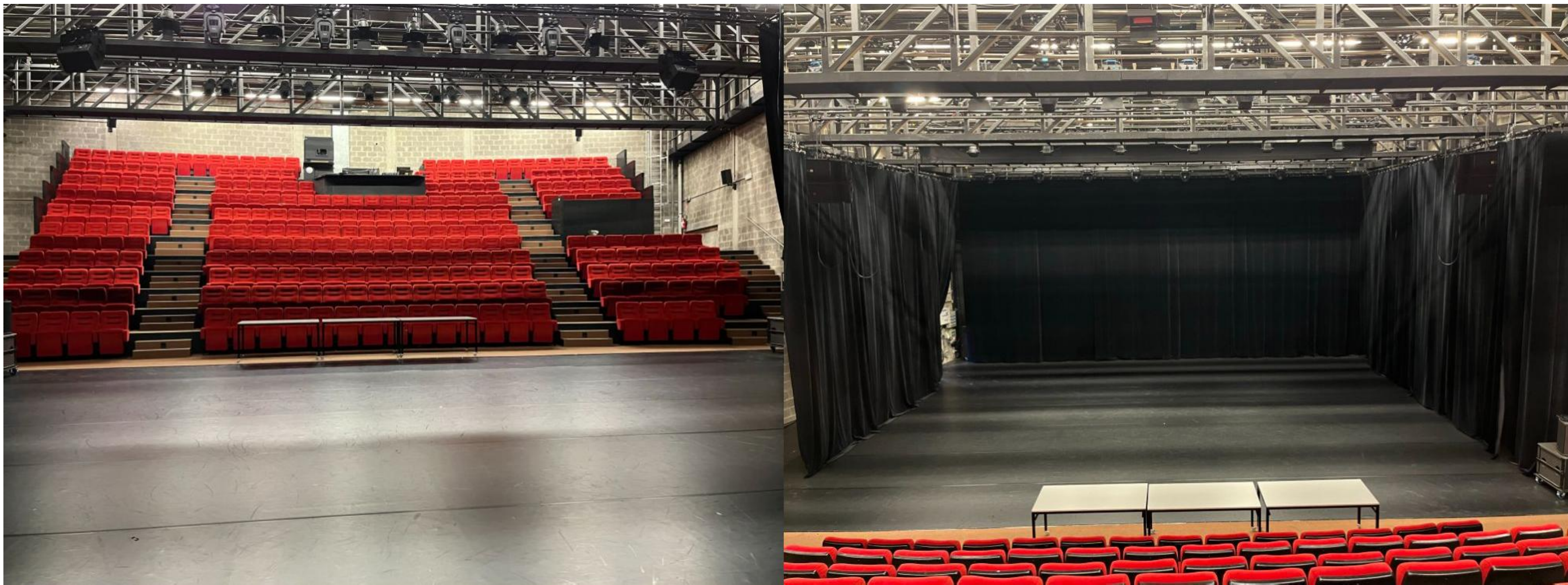
At the end of the corridor,  
I go down the stairs to  
go to the seats.





# HALL 1

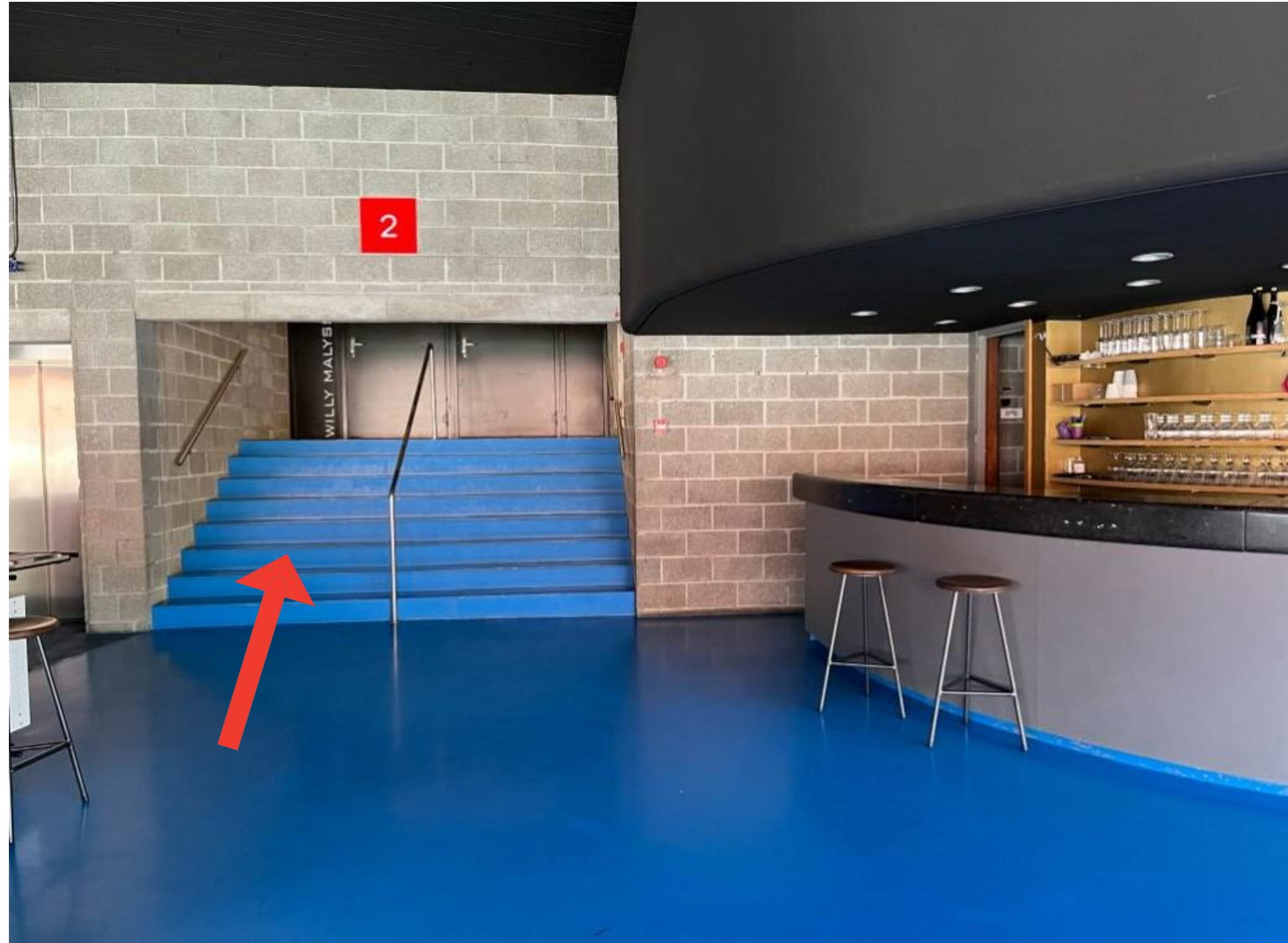
This is what this room looks like. I choose where to sit.  
There are no assigned seats.





# HALL 2

Room 2 is found to the left of the bar.



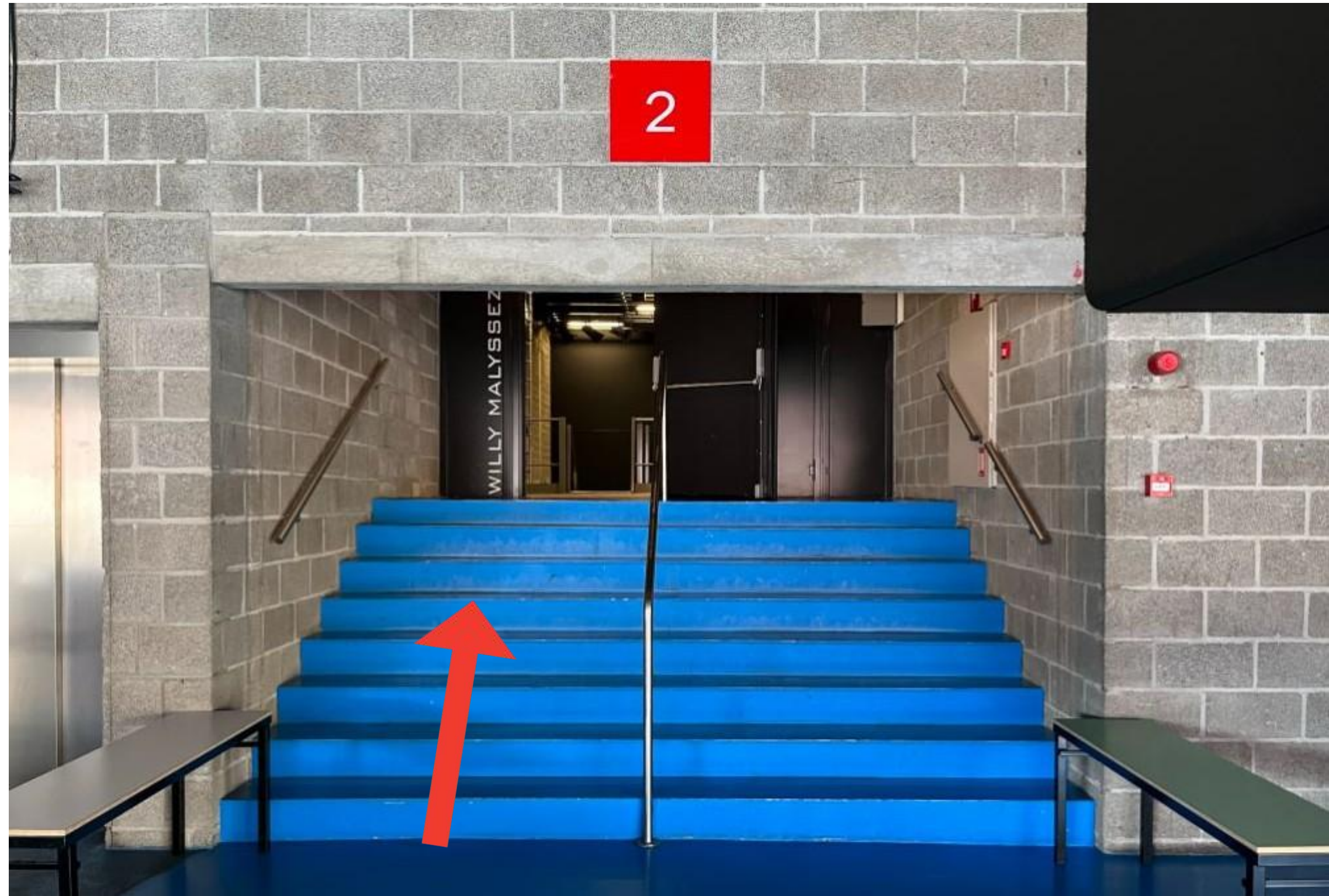


# HALL 2

I go up the stairs to go to hall 2.

To see the wheelchair-accessible entrance, click here.

To continue to room 2, click here.





# HALL 2

If my mobility is reduced, I can also take the lift to the hall.

I ask a staff member present to escort me to the hall via the lift.

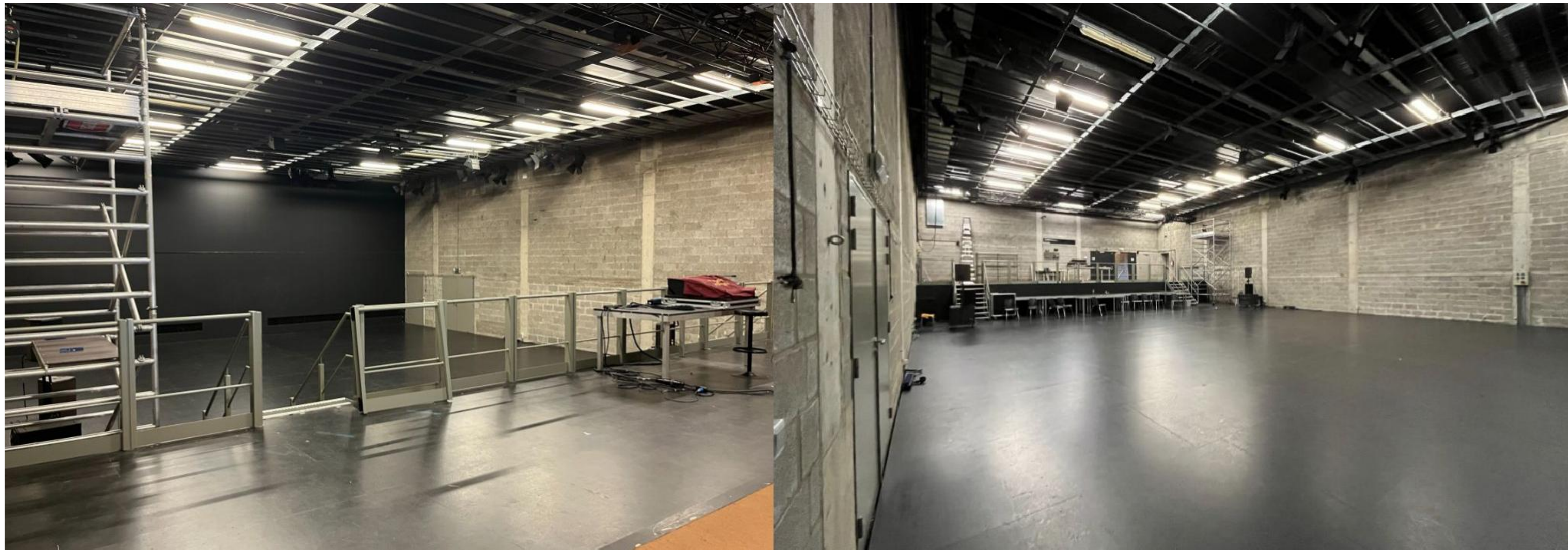
[To continue to room 2, click here.](#)





# HALL 2

This is what this room looks like. I choose where to sit.  
There are no assigned seats.





# IN THE HALL

During the performance, I am supposed to stay in my seat unless told otherwise by the performers.

I will go to the toilet before the performance if necessary so that I can remain seated.

I finish the drink I bought at the bar in the foyer.

I do not take this into the hall.



# INSIDE THE HALL

When I sit in my seat, I turn off my phone or turn down my sound.  
When the performance starts, the lights in the hall will turn off and the doors will close.



During the performance, I can hear loud music or loud noise.

I can also see bright lights.



# AFTER THE PERFORMANCE

When the show is over, the lights go back on and the doors are opened.

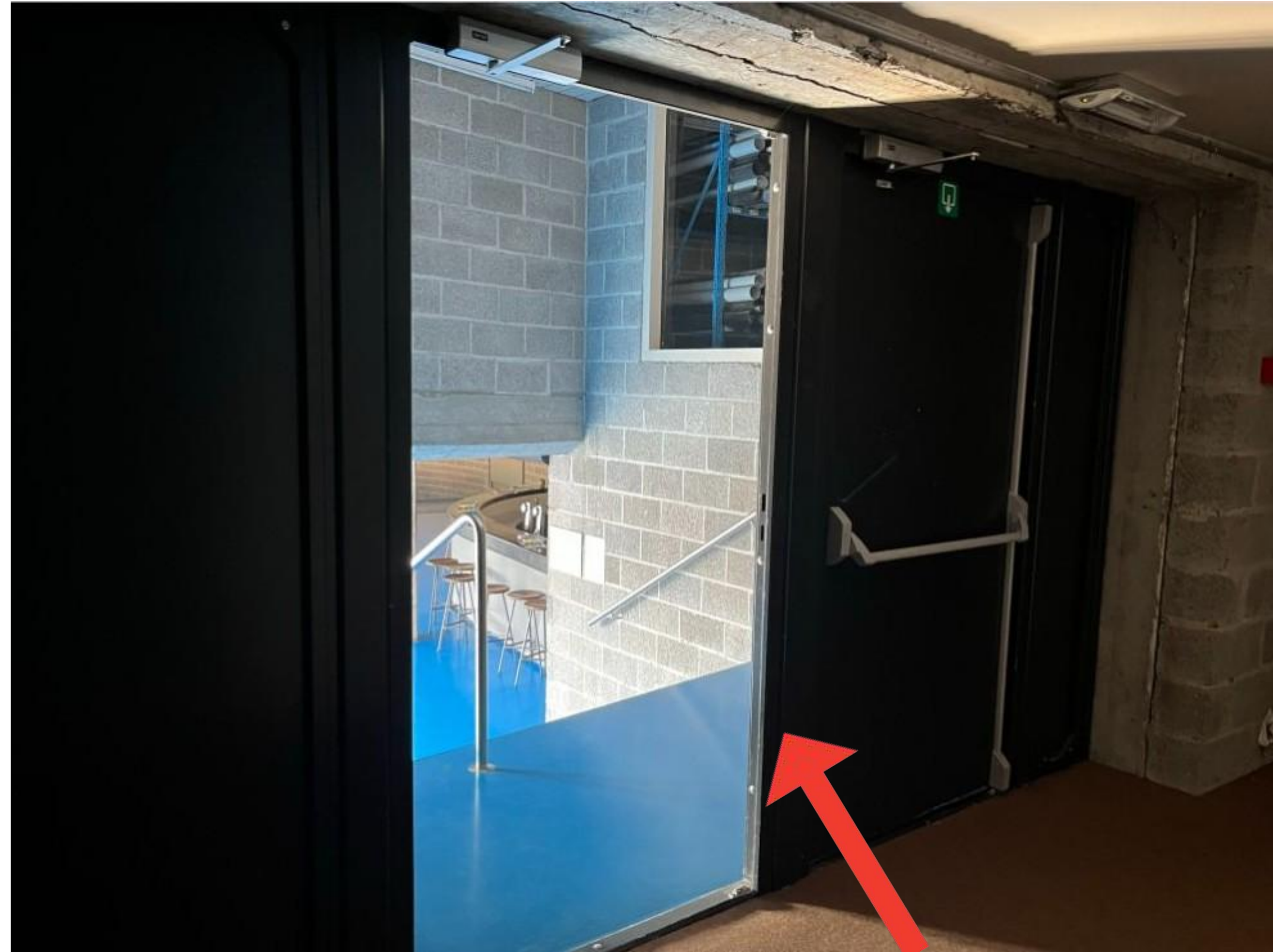
I go out through the door that is open.

If I want, I can sit for a while until most people have left,  
so I can go outside quietly.



# AFTER THE PERFORMANCE

In hall 1, I exit through the door indicated here by the red arrow.





# AFTER THE PERFORMANCE

If I put my stuff in a locker before the show, I will go and get it back after the show.



I leave the locker with the key on the lock.



**ENJOY YOUR VISIT TO  
BUDASCOOP!**